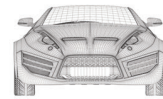


The CAR Model: Driving Influence®



Riverbend's The CAR Model: Driving Influence® is for individuals or teams who influence people, decisions, processes, or results in any direction — up, down, across, and outside their company.

Influential leadership skills are vital to those in matrix organizations, dynamic industries, and multi or cross-functional team environments. This program equips participants to more purposefully know how to drive their influence towards desired results and outcomes.

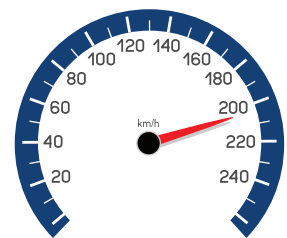
The workshop's three core components are:
Communication, **A**ction, and **R**eputation.

The Riverbend Group has partnered with Virginia International Raceway to pair Riverbend's The CAR Model: Driving Influence® with VIR's and Formula Experience's amazing "rubber meets the road" driving experiences.

In this joint EBL™ (experience-based learning™), you learn how to "drive" your influence across a variety of track conditions, literally and metaphorically!

The CAR Model: Driving Influence® workshop starts at \$9,995* for a 1-day program. The workshop can be tweaked to become a half-day program or extended for an epic two day adventure.

Want epic? Riverbend has proven expertise in taking learning outside the classroom, into an immersive, VIP experience and setting to create the perfect format for transformational learning and culture. We remove you from your day-to-day distractions and surround you in an environment that produces inspiration, authentic conversation, shared experience, and lasting impact. All Riverbend workshops and content are customized based on your business, objectives, opportunities, and the program duration.



For more information on any of the above offerings or to discuss customized solutions, please contact: info@TheRiverbendGroup.com or visit us at TheRiverbendGroup.com

*not including VIR experience, materials, travel, and food & beverage.

